



# KANAGAWA PREFECTURAL KAMITSURUMA SENIOR HIGH SCHOOL

## KAMITSURUMA SHS Mission & Philosophy

As a high school with a full-time general education curriculum as well as being an Inclusive Education Practice promotion school, we will promote a curriculum in which all students learn together and deepen their mutual understanding, taking into account the characteristics of the students and the actual conditions of the environment and school. We will appropriately organize the curriculum to develop academic ability, cultivate rich humanity, encourage strong sociality, and achieve social and professional independence. These characteristics, once developed, will ensure each student can achieve their learning and career goals.

We aim to develop creative human resources who can contribute to an independent and symbiotic society. As such, we will work to expand learning opportunities for each student and engage in educational activities that further cultivate a rich sense of humanity and sociality.

We will work to enrich our educational activities by enhancing the curriculum and using ICT. We will also offer students more opportunities not only at school, but also at home. In addition we will work towards actively cultivating the fundamental qualities and abilities that are the foundation of learning, specifically, the abilities for students to actively think, judge, and express in order to solve problems using basic knowledge and skills. These skills being: language skills, information utilization skills, and problem-finding / problem-solving skills. We will also work to enrich our educational activities by constantly improving classes to help develop students as independent, interactive, and deep learning individuals.



## A Quick Overview of KAMITSURUMA SHS

Inclusive Education	ICT Education
<ul style="list-style-type: none"> <li>★Special admission exam system for those who need special care.</li> <li>★Team teaching classes ( Information Technology, Japanese, Occupation &amp; Life ) and special teaching plans offered for each individual every semester.</li> <li>★Resource rooms for those who need special care.</li> <li>★Universal Design for school facilities.</li> </ul>	<p>Developing human resources through ICT, we offer many opportunities to learn the skills necessary for students to realize a symbiotic society and thrive in Society 5.0.</p> <ul style="list-style-type: none"> <li>★<b>I</b>nnovation: Students learn the ability to continue proposing and creating new systems and ways of thinking.</li> <li>★<b>C</b>hallenge: Develop the ability for students to keep challenging themselves to solve problems.</li> <li>★<b>T</b>eamwork: Students strengthen their ability to work with others to achieve goals.</li> </ul>
School Events	Effective Career Education
<ul style="list-style-type: none"> <li>★Major annual school events <ul style="list-style-type: none"> <li>• Cultural Festival (September)</li> <li>• Sports Festival (June)</li> <li>• Ball Game Festival (March)</li> </ul> </li> <li>★One-day excursions</li> <li>★Domestic school trip to Osaka and Shikoku.</li> </ul>	<ul style="list-style-type: none"> <li>★Enhancement of individual interview skills and career guidance.</li> <li>★Exploration through career education, seeking adequate knowledge to fulfill goals.</li> <li>★Career guidance using external test data.</li> <li>★Self-study space available for students.</li> <li>★Fully air-conditioned school facilities.</li> </ul>



## Inclusive Education

High Schools promoting inclusive education aim to deepen mutual understanding among students.

Through the experience of all students learning together, we aim to help them grow by fostering an attitude of mutual acceptance and respect for diversity.

We do this by cultivating the ability to work together while making the most of each other's strengths.



## Club Activities

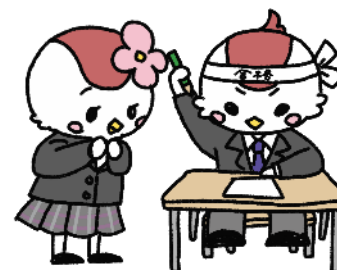
Soccer	Basketball	Baseball	Table-tennis	Track & Field
Swimming	Badminton	Handball	Tennis	Volleyball
Dance	Kendo	American Football	Climbing	Karate
Yoga	Rock Band	Art	Brass Band	Tea Ceremony
Science Research	Cooking	Photography	ICC	Calligraphy
Literature	Drama			



## Graduation Data for the last 3 years

Graduation Year	Private University	Junior College	Vocational School	Enter the workforce	Prepare for next exam	Number of Graduates
2025	116	12	101	14	26	269
2024	117	15	108	16	24	280
2023	118	17	92	11	26	264

In 2025, 116 students passed the entrance examination for private universities, such as Rikkyo (St.Paul's), Chuo University, Senshu University, Kanagawa University, and Meiji Gakuin University, amongst others.





## How to get to Kamitsuruma SHS



### ☆BUS

•10 min bus ride from the south exit of Sagami Stn. Bus Depot No.1 <大13>  
Get off at Kamitsurumakoko

•10 min bus ride from the north exit of JR Machida Stn. Bus Depot No.9 <町89>  
Get off at Kawasemi Kaikanmae and 5 min walk

•9 min bus ride from the north exit of Minami-Machida Grandberry Park Stn. Bus Depot No.3 <町89>  
Get off at Kawasemi Kaikanmae and 5 min walk

### ☆WALK

•25 min walk from Higashirinkan Stn.  
•20 min walk from Tsukimino Stn.

## School Data

### KANAGAWA PREFECTURAL KAMITSURUMA SHS

Founded in 1976 (Showa year 51).

Address : 9-31-1 Kamitsurumahoncho, Minami-Ward,  
Sagamihara-City, Kanagawa Pref.  
252-0318 JAPAN

TEL: 042-743-5622 FAX: 042-743-5803

URL: <https://www.pen-kanagawa.ed.jp/kamitsuruma-h/>

